



# Itinerary

## Pretoria to Cape Town Route

### Day 1: Applicable for 2008

**07:50 – 08:30** Register and check-in at The Blue Train Lounge, Pretoria Station.  
*Guests enjoy pre-departure snacks and drinks.*

**08:30** Boarding starts. Butlers usher guests to their suites. Suite orientation done by butlers.

**08:50** The Blue Train departs from Pretoria Station at 08:50 (am)

**11:30 – 13:00** First sitting for Brunch  
**13:15 – 14:30** Second sitting for Brunch

**15:30** High tea is served in the Lounge Car.

**17:10** The Blue Train arrives at Kimberley Station.  
*Guests disembark and assemble at the railway museum, from where they will be ushered to a bus, which transfers them to the centre of Kimberley to join an old tram for a ride down to the mine.*

**17:45** Guests arrive at the Open Mine Museum for a tour of the mine.  
*Guests are first taken to the Diamond Die to try their luck to win a diamond, after which they will view, interesting and historical sites. Guests are also taken onto an enclosed ramp on the edge of the Kimberly hole.*

**18:35** Guests depart from the Open Mine Museum for Kimberley Station.  
*At Kimberley Station guests are greeted with a glass of sherry. The sherry glass engraved with The Blue Train logo is a memento for guests to keep.*

**19:05** The Blue Train departs Kimberley Station for the journey Southbound to Cape Town.  
*After this exciting tour, guests are free to refresh themselves and enjoy pre-dinner drinks served at any one of our lounges. Remember, dinner is an elegant affair and men are requested to wear a jacket and tie or dress in traditional attire and ladies in elegant evening or traditional wear.*

**19:30** First sitting dinner

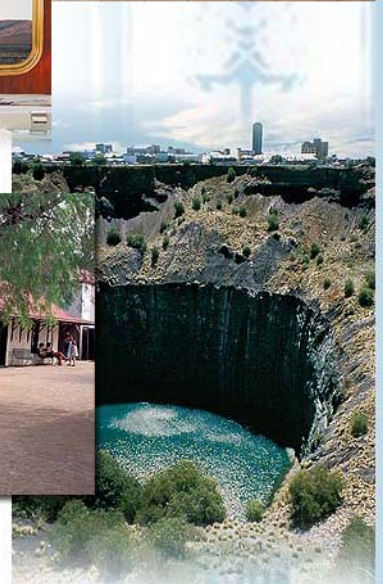
**21:15** Second sitting dinner

### Day 2:

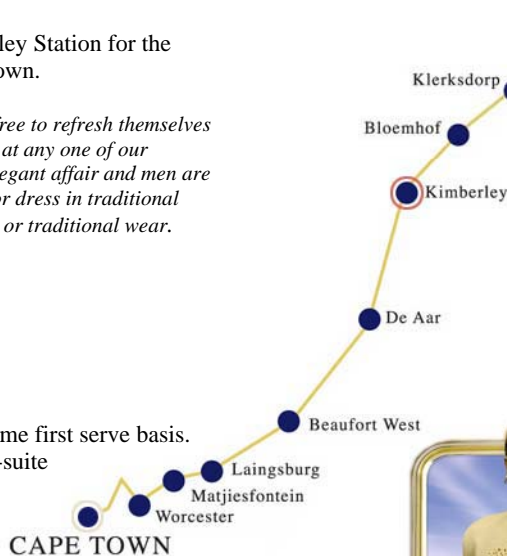
**07:00 - 10:00** (Next morning)  
Breakfast is served on a first come first serve basis. Breakfast can also be served in-suite at the guests' request.

**12:30** The Blue Train arrives at Cape Town Station.

*Butlers usher guests to The Blue Train Lounge*



PRETORIA



**THE BLUE TRAIN**  
A WINDOW TO THE SOUL OF SOUTH AFRICA

**Thank you for joining us  
on this memorable experience!**

